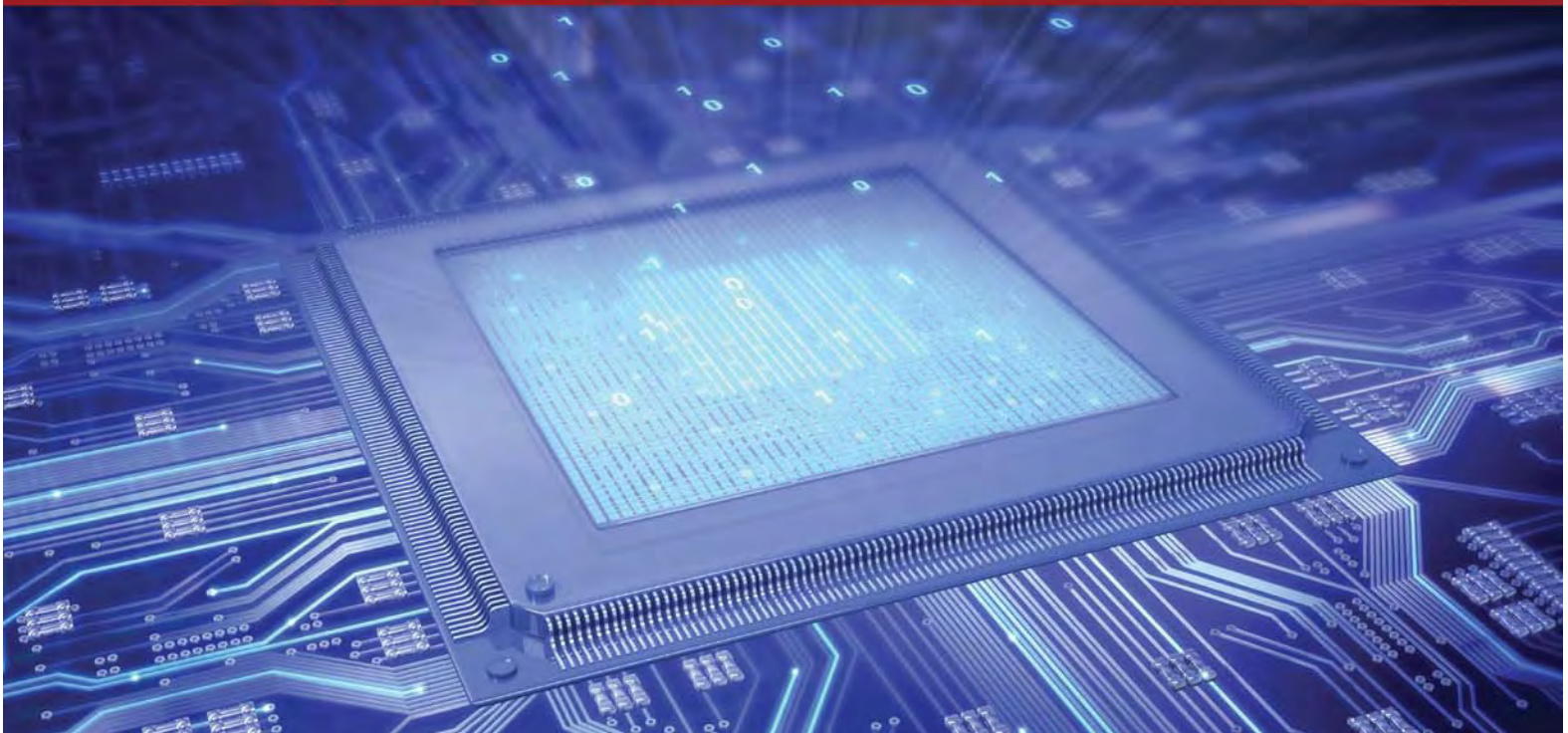




- Information Technology Services and Solutions
- Service-Disabled Veteran-Owned Small Business (SDVOSB)
- Small Disadvantaged Business (SDB)
- Established since 1991



# CONTENTS

- COMPANY OVERVIEW ..... 3
- ABOUT OUR FOUNDER ..... 4
- GOVERNMENT CLIENTS ..... 4
- CLOUD ENABLEMENT SERVICES ..... 5
- MANAGED NETWORK AND SECURITY SERVICES ..... 6
- ENTERPRISE APPLICATION IMPLEMENTATION SERVICES ..... 7
- ADMINISTRATION, MAINTENANCE & UPGRADES ..... 8
- INFRASTRUCTURE DESIGN SERVICES ..... 9
- PROJECT STAFFING & CONSULTING SERVICES ..... 10
- APPLICATION DEVELOPMENT SERVICES ..... 11



[www.kelcompute.com](http://www.kelcompute.com)



# COMPANY OVERVIEW



## ABOUT KELCO

*Kelco Computing Solutions has been designing, installing, and supporting technology solutions for over 20 years.*

*Founded in 1991 by a decorated U.S. Air Force Service-Disabled Veteran, Kelco is a proven company with pride and commitment to excellent outcomes.*

*Our highly skilled management & technical personnel have performed successfully on projects worldwide. Our engineers possess multiple vendor certifications. We embrace and adhere to industry standards and program certifications.*

*Our talented team has provided services and solutions for various business sectors including: Large Business, State/Local Government, and Federal Government/Military.*

*As a reliable vendor we maximize our talents, and management skills to deliver excellent project outcomes as we help achieve your small business contracting goals.*

## OUR VALUE PROPOSITION

*Kelco is committed to applying the best available technology and human resources to achieve high performance as we deliver cost effective solutions.*

## THE KELCO DIFFERENCE

*Our existence in business since 1991 is a testament to our firm's exceptional ability to adapt to and embrace evolving and emerging technologies. Our management philosophy ensures we obtain a thorough understanding of mission and project objectives before our quality efforts and solutions are design and deployed.*

**KELCO COMPUTING SOLUTIONS**  
Washington, DC • San Francisco, CA  
**1-800-270-5861**

Year Established: 1991  
Dunn & Bradstreet Number: 11-344-8174  
Cage Code: 3C0H0  
Web address: <http://www.kelcompute.com>

NAICS Codes: 541511 541512 541513  
811212 541618 541690  
541611 541519 423430

### Managed Cloud Services

- Enterprise Cloud Readiness Assessment
- Enterprise Cloud Migration and Integration
- Enterprise Cloud Optimization
- Managed Application Services

### Information Technology Services

- Managed Network and Security Services
- Enterprise Application Implementations
- Administration, Upgrades & Maintenance

### Technology Project Services

- Project Management
- Design & Integration
- Staff Augmentation
- Equipment/Software Acquisition

### Infrastructure Design Services

- Data Centers
- Office Expansion/Consolidation

### Application Development

- COTS technology mods
- Database designs/queries
- Business Intelligence

## ABOUT OUR FOUNDER

*Chris Roberts founded Kelco Computing Solutions in 1991 after a distinguished military career with the United States Air Force. Mr. Roberts' involvement in technology began in 1984 with high school BASIC & COBOL programming classes. His aptitude and knowledge were developed in college and later refined and enhanced through military training and vast experience with large businesses. After extensive Information Systems and Telecommunication Specialist training he was assigned to the 1993<sup>rd</sup> Communications Squadron at Dyess Air Force Base, TX. Possessing a TOP SECRET/SIOP-ESI/SBI clearance, he was part of a specialized team responsible for Information Systems operations and Information Security as well as multiple classified technology projects. After his exciting and honorable service Mr. Roberts began applying his knowledge, discipline, focus and commitment to Information Technology to multiple privately held businesses and his now +20 year old company -Kelco Computing Solutions*



**Chris Roberts,  
Chairman & CEO**

## GOVERNMENT CLIENTS

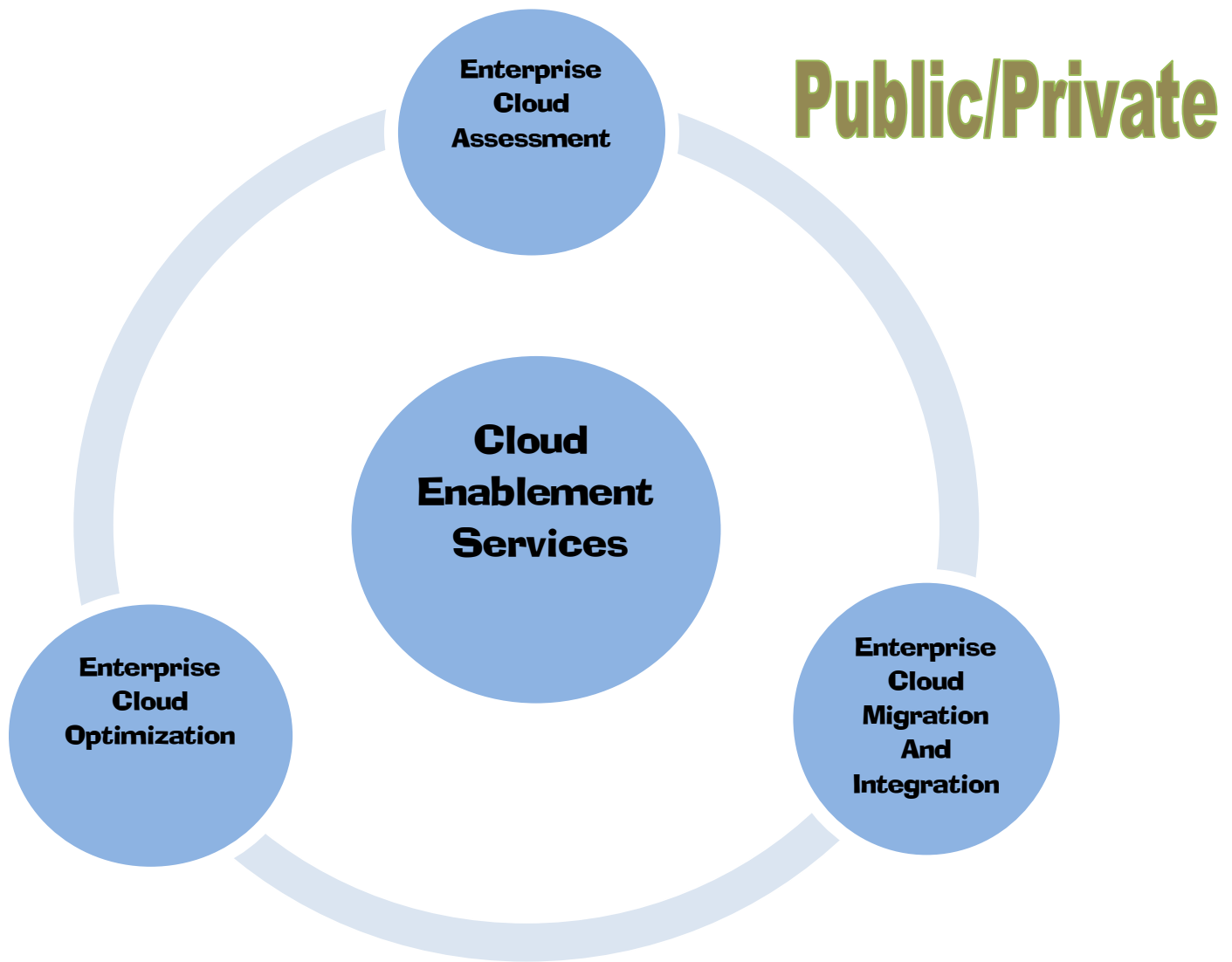
(Partial Listing)



## CLLOUD ENABLEMENT SERVICES

*For companies, organizations, agencies or departments moving computing resources to the cloud, or interested in XaaS-enablement, Kelco offers experience and expertise. We can deploy a set of Cloud Enablement Services (CES) to ease and accelerate your migration to the cloud. Our CES include:*

- *Enterprise Cloud Readiness Assessment*
- *Enterprise Cloud Migration and Integration*
- *Enterprise Cloud Optimization*

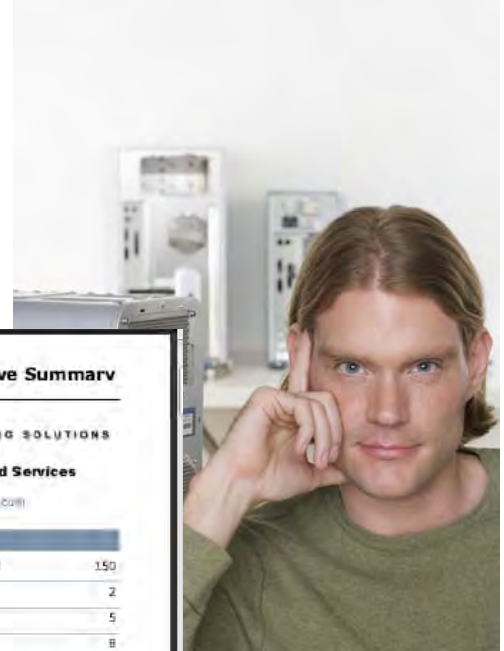


## Managed Application Services

## World Class Enterprise Data Centers

# MANAGED NETWORK AND SECURITY SERVICES

At Kelco Computing Solutions we know you can't manage what you can't measure. Understanding that you have a sizable investment in IT, Kelco will proactively manage risk and ensure optimum performance using the most advanced performance monitoring and asset tracking tools. Our senior engineers provide valuable insight and consulting services that help support your mission and department technology plans.



### Executive Summary

**Premiere Managed Services**

www.kelco.com

**Company Name:** ABC Company  
**Contact Name:** John Doe  
**Period:** 9/27/2009 4:55:00 PM - 10/11/2009 4:55:00 PM  
**Created On:** 10/11/2009 5:01:44 PM

---

**SRs Health:** 75.48%

Category	Value
<b>Servers</b>	<b>70.83%</b>
Server Availability	100.00%
Patches	100.00%
MBSA	17.50%
<b>Workstations</b>	
Patches	100.00%
MBSA	100.00%
<b>Network</b>	
Internet Availability	100.00%
Network Services Availability	100.00%

**Managed Activities:**

Patch Assessments Completed	150
New Devices Added	2
Trouble Tickets Closed	5
Remote Sessions	8

---

**Top 5 Disk Utilization (Servers)**

**Main SBS Server - HP ML350**

F:	62.10% Used
C:	56.20% Used
D:	31.90% Used

**Onsite Manager Server**

C:	15.20% Used
----	-------------

---

**Server Patch Summary**

Failed - (0)	Installed - Reboot - (1)
Needed - Downloaded - (0)	Not Needed - (16)

Failed - (0)	Installed - Reboot - (0)
Needed - Downloaded - (10)	Not Needed - (72)

---

**M&S Summary**

Incomplete Scan - (5)	Potential Risk - (3)
Severe Risk - (12)	

Page 2 of 3

### Windows Server Health

**Device Name:** Main SBS Server - HP ML350  
**Discovery Date:** 9/9/2009 2:17:39 PM  
**Manufacturer:** Compaq  
**Model:** ProLiant ML350 G3  
**Memory:** 3,919 MB  
**CPU:** Intel(R) Xeon(TM) CPU 3.06GHz; Intel(R) Xeon(TM) CPU 3.06GHz  
**Reporting Period:** 9/27/2009 5:05:00 PM - 10/11/2009 5:05:00 PM

**Operating System:** Microsoft(R) Windows(R) Server 2003 for Small Business Server  
**OS Version:** 5.2.3790  
**Service Pack:** 2.0  
**IP Address(es):** 10.0.47.252  
**Disk Capacity:** C: 12296 MB; D: 57156 MB; F: 138913 MB  
**AssetTag:** M001LK893H  
**Report Created On:** 10/11/2009 5:10:47 PM

---

**Performance**

**Server Availability:**

**CPU Usage:**

**Page File Usage:**

**Memory Usage:**

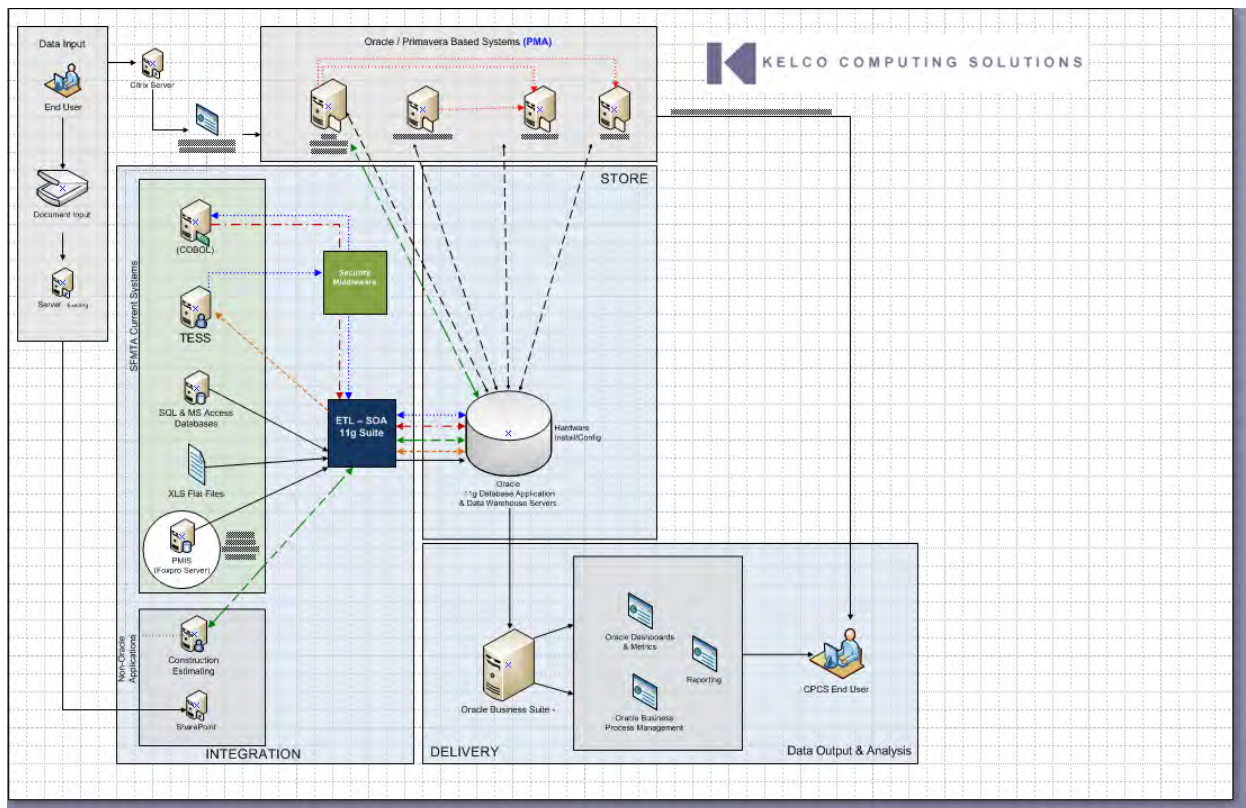
**Network Service Availability:**

**Disk Utilization:**

Drive	Used Space	Free Space
F:	81223MB	52308MB
D:	10317MB	38949MB
C:	8917MB	5364MB

# ENTERPRISE APPLICATION IMPLEMENTATION SERVICES

*We are meticulous integrators and trusted advisors. At Kelco we maintain partnerships with and work with the leading technology companies in the world. Our innovative brainpower has help consistently deliver projects on time, within budget and with outstanding results. From architecting to upgrading to administration our professionals produce exceptional outcomes.*

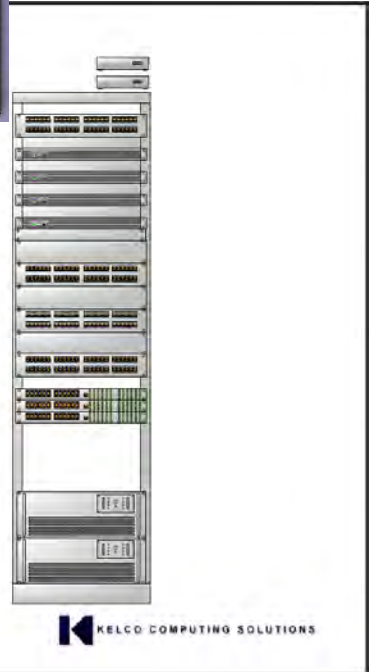
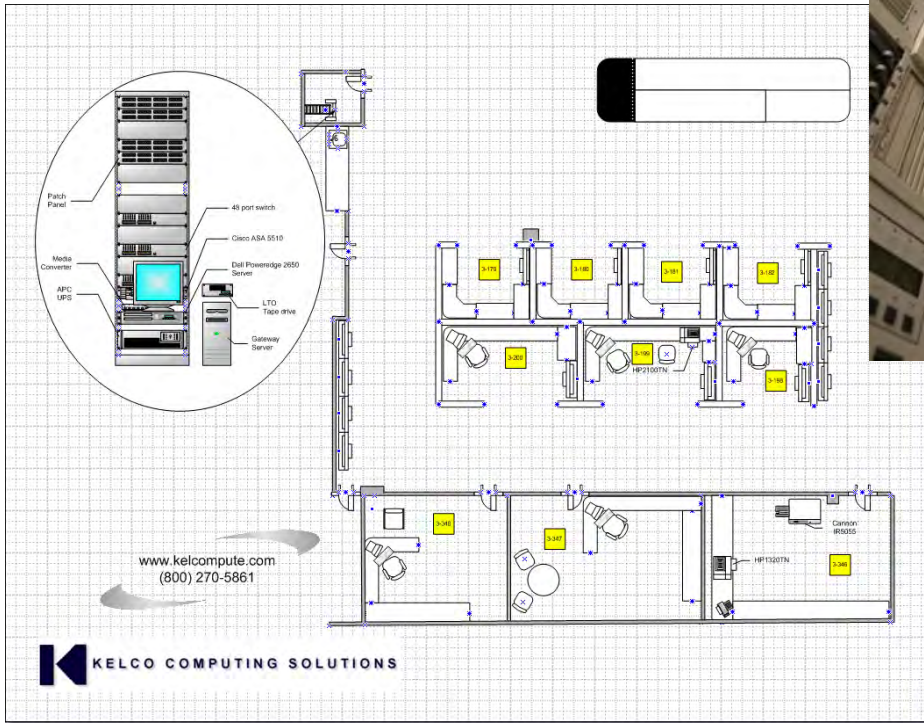


*Some of our partner relationships include:*



# ADMINISTRATION, MAINTENANCE & UPGRADES

*Need IT support, 24x7 server maintenance, helpdesk, desktop, rollout, or project assistance? Kelco Computing Solutions is your answer. For over 20 years we have provided certified and talented personnel to meet the needs of our clients.*



**Microsoft**



**COMPAQ**



**lenovo**

**vmware**



KCS0914-01



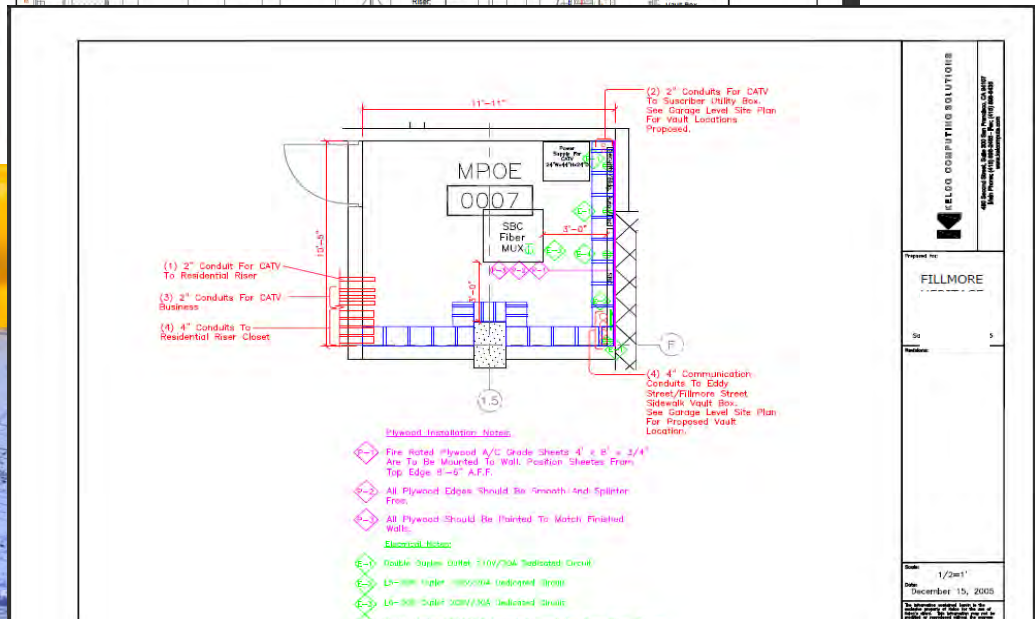
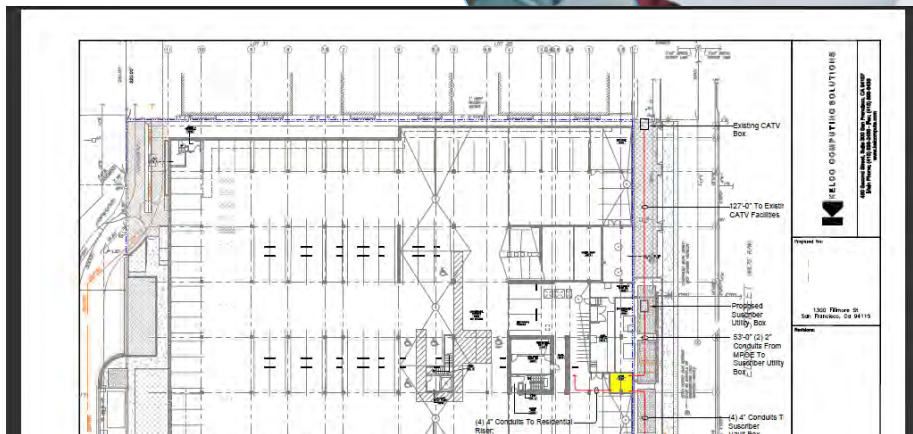


# INFRASTRUCTURE DESIGN SERVICES

*Kelco Computing Solutions provides exceptional technology infrastructure design services. From Data Centers to MPOE's, our talented engineers are highly skilled in capacity planning, consolidation, emerging technologies and energy efficiency.*

*Our designs will help ensure reliable operations with adequate fault tolerance all while helping to reduce operating costs.*

*We provide great attention to detail; and our outstanding documentation, provide you with an invaluable reference tool.*



## PROJECT STAFFING & CONSULTING SERVICES

*Kelco Computing Solutions provides Professional consulting services that include staff augmentation*

- *PMI-certified Project Managers*
- *Database Administrators*
- *System engineers*
- *Help Desk staff*
- *Application Developers*
- *Support engineers*
- *Design engineers*
- *Training specialist*
- *Administrative Support*

*We maintain relationships with some of the best and brightest talent, and we deploy them in a framework that provides excellent management and support. This allows us to consistently deliver talented resources that are a cultural fit for your team.*



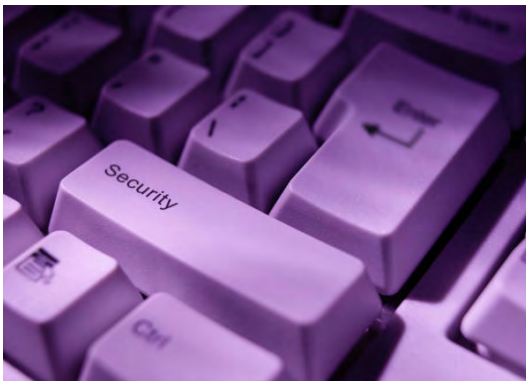
# APPLICATION DEVELOPMENT SERVICES

*We help empower your workforce by ensuring high levels of functionality in Information Systems.*

*Kelco has expertise in applying systems engineering solutions that improve productivity, reduce costs, and enhance capabilities. We deploy solutions using waterfall, agile, and hybrid methodologies.*

*We can tailor commercial off-the-shelf technology to meet strict functional, program and performance requirements.*

*We use our proven methodology to provide leading-edge life cycle development and operational support.*



## ***Data Management & Security***

*Integration of data from your customers, other business units or suppliers can expose security risks. Our developers and security professionals help minimize those risks and transform disparate data sources into rich information that supports your mission goals and business decisions. We use advanced data mining techniques to understand trends and gain insight into data storage and retrieval efficiencies.*

*Our Subject Matter Experts can help you address Certification and Accreditation as well as Federal security standards, testing, and authority to operate directives.*





[www.kelcompute.com](http://www.kelcompute.com)



*Technology Services and Solutions!*

(800) 270-5861

*[dana@kelcompute.com](mailto:dana@kelcompute.com)*

---

**Headquarters**  
1 Market Street  
Spear Tower, 36<sup>th</sup> Floor  
San Francisco, CA 94105

Tel: 415-896-2465  
Fax: 415-896-6435

**Washington, DC Office**  
1200 G Street NW  
8<sup>th</sup> Floor  
Washington, DC 20003

Tel: 202-464-2685  
Fax: 202-204-5609

